



GSX Monitor

New Features for Sametime 8.5

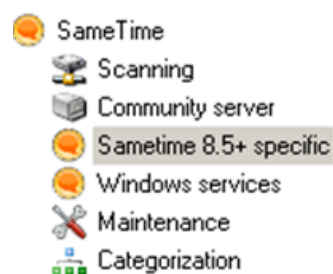
GSX Monitor is one of the most widely used monitoring tools for messaging, collaboration, and mobile environments on the market today. Using one application you can simultaneously monitor IBM Lotus Domino, Sametime, Quickr, Traveler, Microsoft Exchange, Microsoft Sharepoint, Blackberry Enterprise Servers, LDAP, SMTP ports, and URLs. Now, with the release of **GSX Monitor and Analyzer** Version 10, administrators can proactively monitor the new and extended features in IBM Sametime 8.5.

GSX Monitor can now be used to monitor the components of your Sametime deployment leveraging Websphere, including the System Console, the Proxy Server, the Media Manager, the Meeting Server, as well as the Domino based Community Server. **GSX Monitor** not only monitors servers; it also monitors all of the Sametime Windows services and generates alerts when performance falls below the predefined thresholds.

With **GSX Monitor** Version 10, administrators can accurately supervise the availability of key services at the Sametime level and ensure the continuity of these critical services.

NEW SAMETIME 8.5 SUPPORT FEATURES IN GSX MONITOR VERSION 10

- ✓ Manage and monitor the availability of Sametime 8.5, including the System Console, the Proxy Server, the Media Manager, and the Meeting Server
- ✓ Manage and monitor the availability of the Domino based Community Server
- ✓ Monitor Community Server Chat Messages
- ✓ Monitor the WebSphere nodes used by Sametime
- ✓ Monitor any Sametime Windows service on the server



SUPPORT FOR WEBSHERE SERVERS

GSX Monitor can be configured quickly and easily to monitor the WebSphere nodes used by Sametime 8.5. Simply select the types of nodes you want to monitor, for example, Console, Proxy, Media, or Meeting, enter your WAS login name and password, and select the connector type (RMI or SOAP).

Sametime 8.5+ specific - WebSphere Nodes settings for sametime01.gsx.net

Select the type(s) of WebSphere nodes you want to monitor.

Type	Login name	Password	Connector	Node name	Port
<input type="checkbox"/> Console			0	STConsoleServer	8878
<input checked="" type="checkbox"/> Proxy	wasadmin	xxxx	Soap	STProxyServer	8879
<input checked="" type="checkbox"/> Media	wasadmin	xxxx	Soap	STMediaServer	8886
<input type="checkbox"/> Meeting			0	STMeetingServer	8883

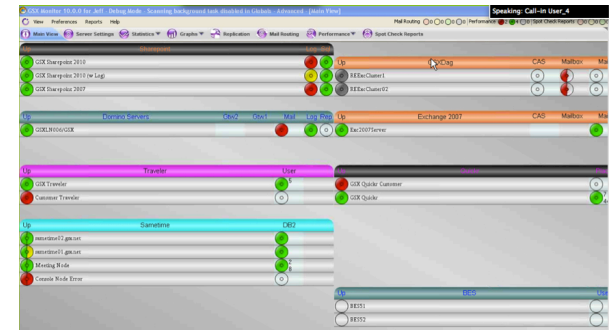
GSX Monitor: Configuring Sametime 8.5 WebSphere Nodes

Internet host name (e.g. sametime.gsx.net)	Sametime Server Alias (for display only)	Sametime Windows services alerts		
		Windows services	Trigger this Alert if a Service is Down	Trigger this Alert if a Service is Up
sametime02.gsx.net	sametime02.gsx.net	Status: 3 selected	Default	Default
xxx.xxx.xxx.xxx	sametime01.gsx.net	Status: Disabled	Default	Default
xxx.xxx.xxx.xxx	Meeting Node	Status: 1 selected	Default	Default
xxx.xxx.xxx.xxx	Console Node Error	Status: Disabled	Default	Default

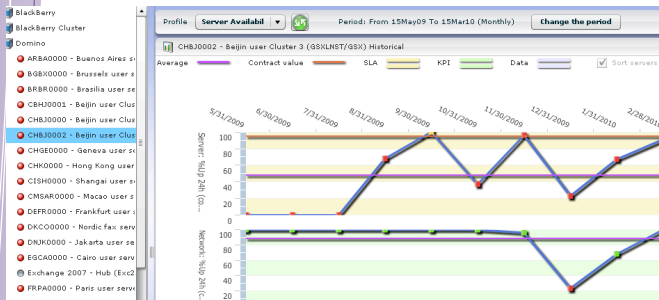
GSX Monitor: Configuring Sametime Windows Services Alerts

PLUS ALL THE POWER OF GSX MONITOR

- ✓ A single solution for monitoring your entire collaborative environment
- ✓ Real-time information at a glance
- ✓ Monitor services as well as servers
- ✓ Proactive, threshold-driven alerts to notify the support team **before** a problem occurs



GSX Monitor Dashboard



GSX Analyzer: Environmental Health

GSX ANALYZER

- ✓ **GSX Analyzer** – a powerful executive dashboard that provides automated management reports
- ✓ Use Environmental Health to compare the performance of SLAs and KPIs across all servers in your environment
- ✓ Use trend reports to track the performance of selected statistics over a period of time.



SOLUTIONS:

GSX Monitor and GSX Analyzer
GSX Server Guard
GSX 360

SERVICES:

Consultancy
On-site training
Support



FOR MORE INFORMATION:

For more information on GSX, visit www.gsx.com, where our resource center contains FAQs, Case Studies, Podcasts, White Papers, and Webinars.

You can also download a fully functional, 30 day evaluation copy of GSX Monitor, GSX Server Guard, and GSX 360.

CONTACT:

sales@gsx.com

