



Think **GSX Monitor** to proactively

- **Monitor**
- **Manage**
- **Measure**

your Messaging, Collaboration and
Mobile environment

GSX Monitor v10

GSX
SOLUTIONS

GSX MONITOR

QUICK START GUIDE

Contents

INTRODUCTION.....	2
Important Note	2
HARDWARE / SOFTWARE REQUIREMENTS	3
PREREQUISITES.....	4
Pre-Install Check List	4
INSTALLATION	4
GSX Analyzer Installation	6
GSX Monitor Installation	9
GENERAL CONFIGURATION	14
Setting up email servers.....	14
Adding New Server Entries.....	15
Next Steps	17

INTRODUCTION

This guide is designed for users who want to install, to check the requirements and to follow the first steps of the configuration of GSX Monitor. Advanced concepts are discussed in the GSX Documentation Database or in white papers and articles on www.gsx.com.

Important Note

GSX strongly recommends that once GSX Monitor is permanently deployed, it be installed on a dedicated workstation that is left running at all times and is not used for any other purpose. In environments with 100+ monitored servers, usage of hyper-threading technology or bi-processor computers will allow better performances and shorter scanning cycles.

- GSX Monitor / GSX Analyzer should not be installed on the same server as the application that it is monitoring (crash of that server will result in a crash of monitor).
- There is no requirement to install any monitor component on monitored servers.
- GSX recommends using a clean machine, which does not have any previous versions of Notes, or other software installed.
- On Windows NT/2000/XP/2003, be sure that you are logged on as Administrator or as someone with Administrator rights.
- Avoid installing GSX Monitor using the Microsoft Terminal Server utility: this program prevents installing drivers.

HARDWARE / SOFTWARE REQUIREMENTS

OS and Component	Enable services on GSX Monitor	RAM	CPU	Disk Space	Screen resolution	GSX Analyzer specific requirements
<p>Windows 2000, XP, 2003, 2008, Vista, Windows 7, 32 or 64 bit server, advanced server workstations. Windows Home or Professional editions</p> <p>Microsoft .NET Framework 2 and Microsoft .NET Framework 4 (Full) must be installed on the monitoring station.</p>	<p>Domino, Sametime, Traveler and Quickr: Lotus Notes Client 5.x, 6.x, 6.5.x, 7.x, 8.x -- full client installed with ID with access as listed in Server access table</p> <p>Sametime 8.5: Monitor opens a local port for our java application used to communicate with Core Monitor, DB2 driver installed</p> <p>Exchange: For 2010 when admin does remote PowerShell: PowerShell v2.0 installed</p>	2GB	Dual Core Proc.	800 MB Page File 300 MB of free disk space	Color monitor 1024x768 or higher resolution	<p>Windows 2003 SP3 / Windows XP or later</p> <p>IIS 5.1 and later For IIS 7 & 7.5, GSX Analyzer requires the IIS 6 Metabase Compatibility Component</p> <p>The Microsoft .NET Framework 4 needs to be installed.</p> <p>Adobe flash player 10.0 or later.</p>

PREREQUISITES

Pre-Install Check List

1. Ensure that your system and configurations meets the minimum requirements.
2. Ensure that you have the required access rights to scan the server.
3. If you plan to monitor Domino servers, be sure that a Notes client is installed on the GSX Monitor workstation and is operational and can access the servers you wish to monitor.

INSTALLATION

1. On Windows 2000/2003/2008/XP/7, be sure that you are logged on as Administrator or as someone with Administrator rights.
2. Avoid installing GSX Monitor using the Microsoft Terminal Server utility: this program prevents installing drivers.
3. Close all other programs running on the workstation.
4. Launch the Setup program.
5. Select the options that you wish to install:
 - **GSX Monitor** - Core Product, the Monitor Engine will provide real time availability data and alert capabilities while gathering statistics for processing and reporting by GSX Analyzer.
 - **GSX Analyzer** is a web portal providing a user friendly view of historical data with the help of an interactive dashboard containing animated gauges and graphs. GSX Monitor provides GSX Analyzer with all historical data such as statistics reports and alerts. GSX Analyzer then allows consolidating data and scheduling the generation and the export of your reports. In addition to periodic statistics reports, three types of Trend reports can also be generated and exported on a daily, weekly and monthly basis.
 - **Monitor Remote Client Interface** requires a special license, allows access to GSX Monitor Graphical interface from another machine.

- **MoniPing** allows you to monitor and report on the availability of GSX Monitor from another machine.

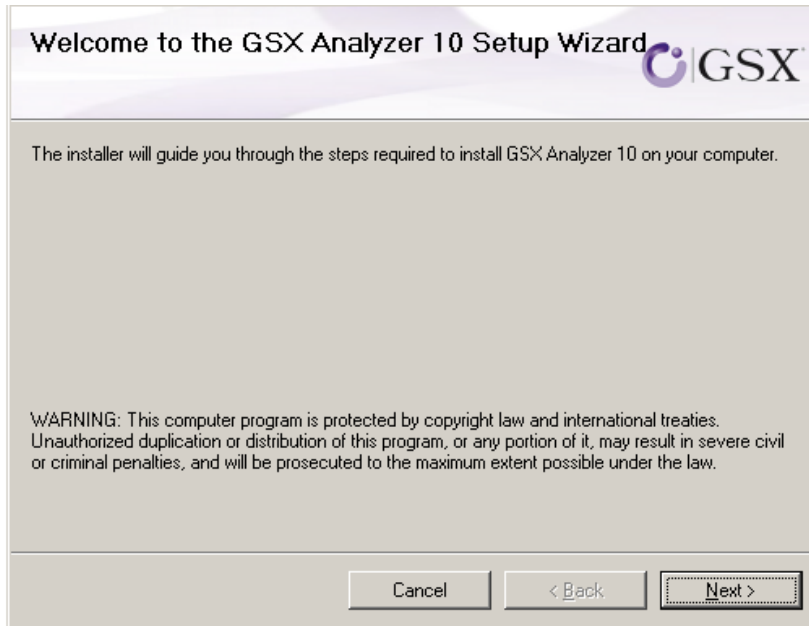


GSX recommends installing GSX Analyzer first. GSX Analyzer is a website and requires a Web server installed and configured on the workstation in order to publish the data.

GSX Analyzer Installation

The wizards will guide you through GSX Analyzer and GSX Monitor installation.

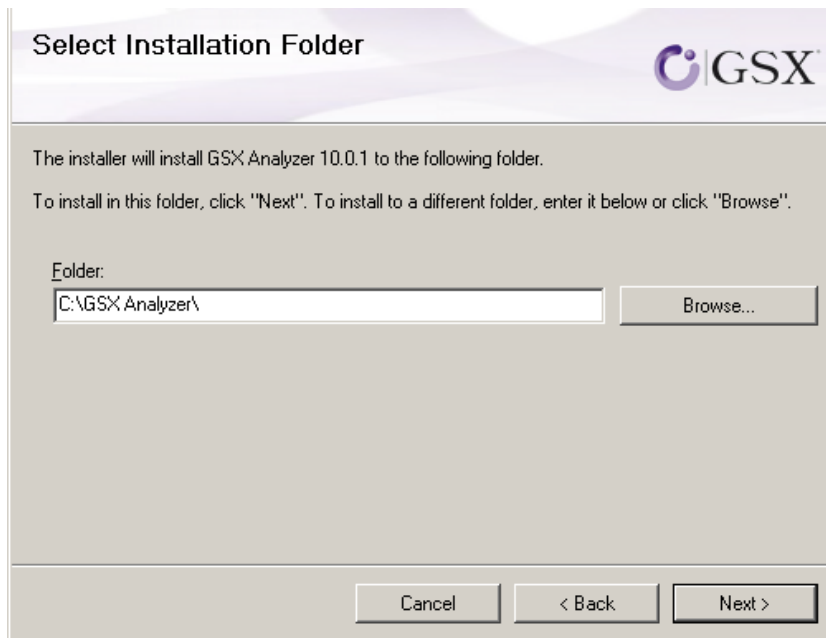
1. Click **Next**:



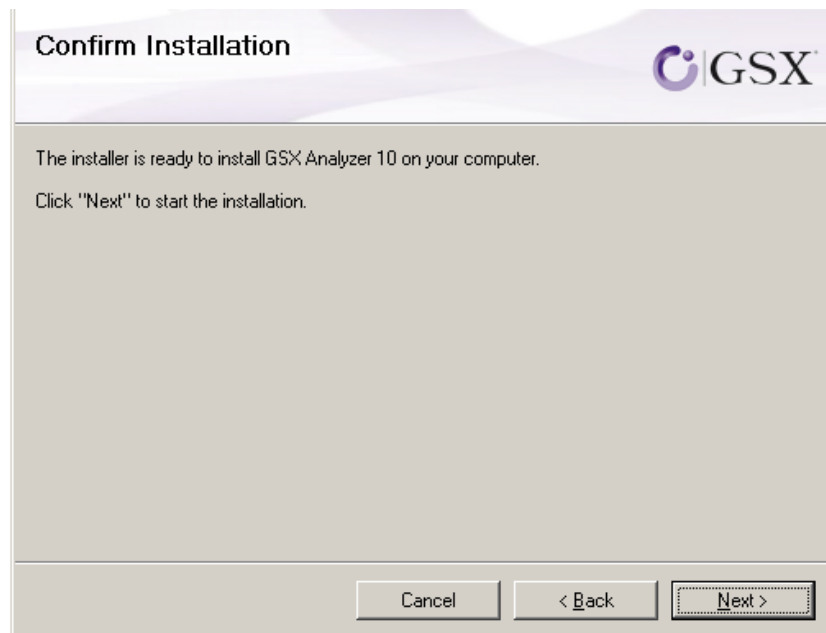
2. Agree the License Agreement and click **Next**:



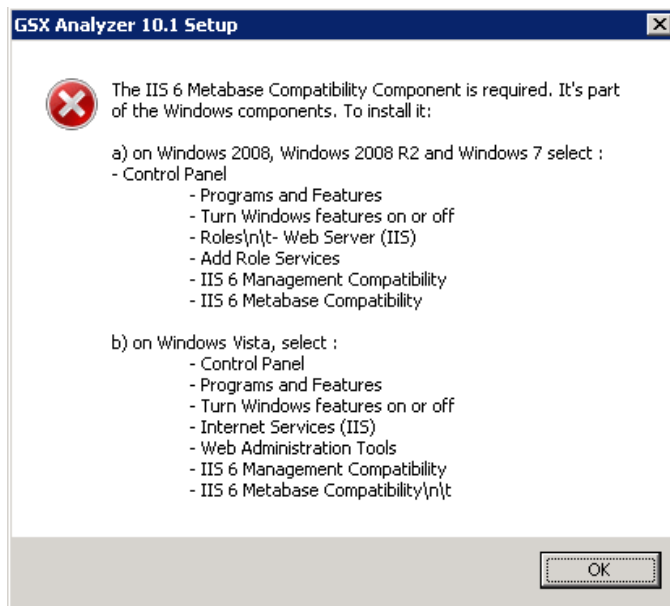
3. If necessary, browse for a different installation folder, and click **Next**:



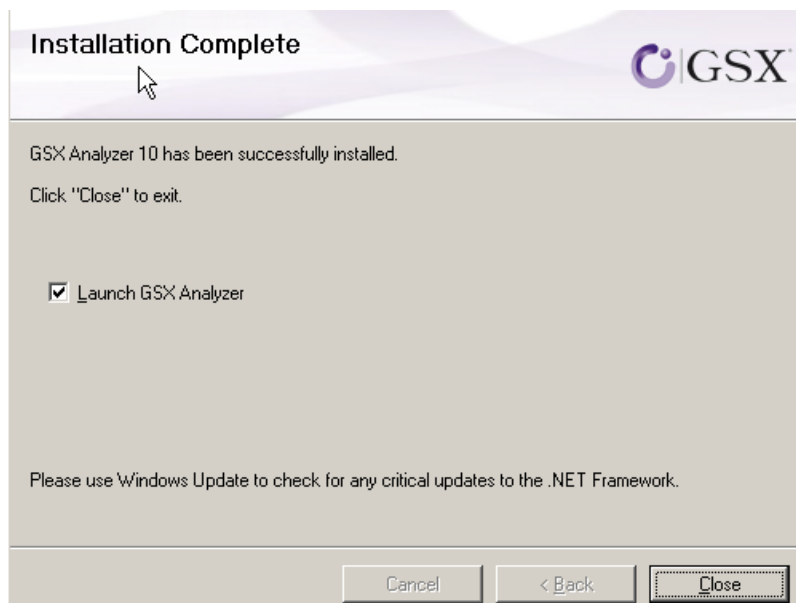
4. Click **Next** to start the installation:



5. If the following message is displayed, you have to install an IIS component. Follow the steps described, and click **OK**:

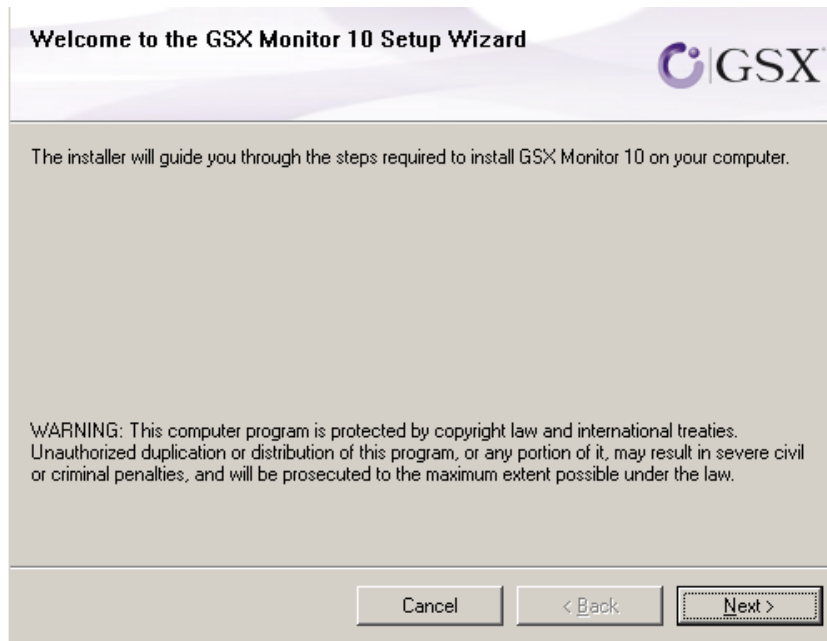


GSX Analyzer is now installed:

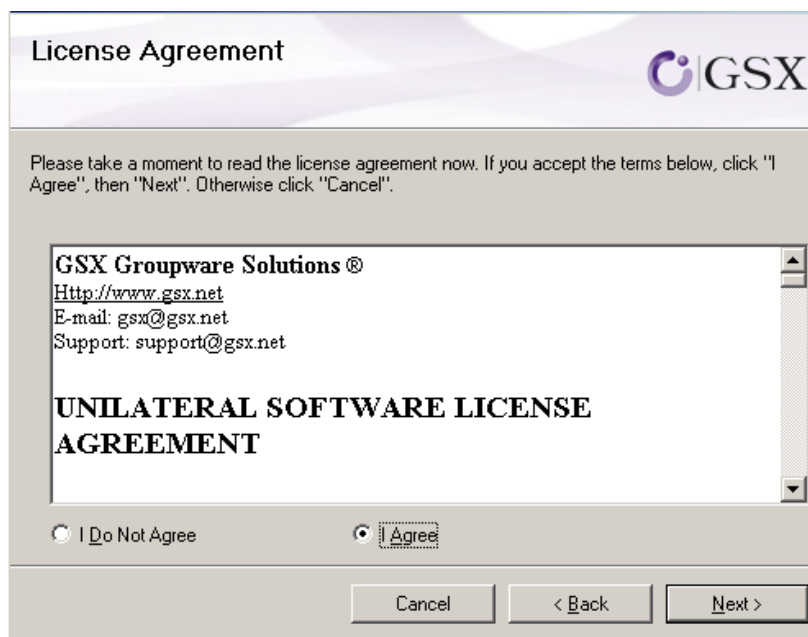


GSX Monitor Installation

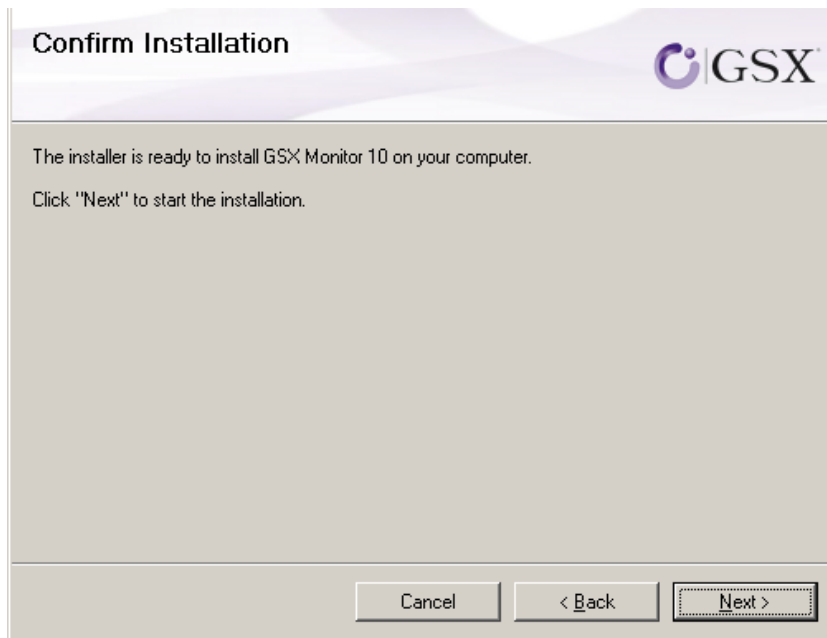
1. Back to the first screen, select the GSX Monitor installation option.
2. Click **Next**:



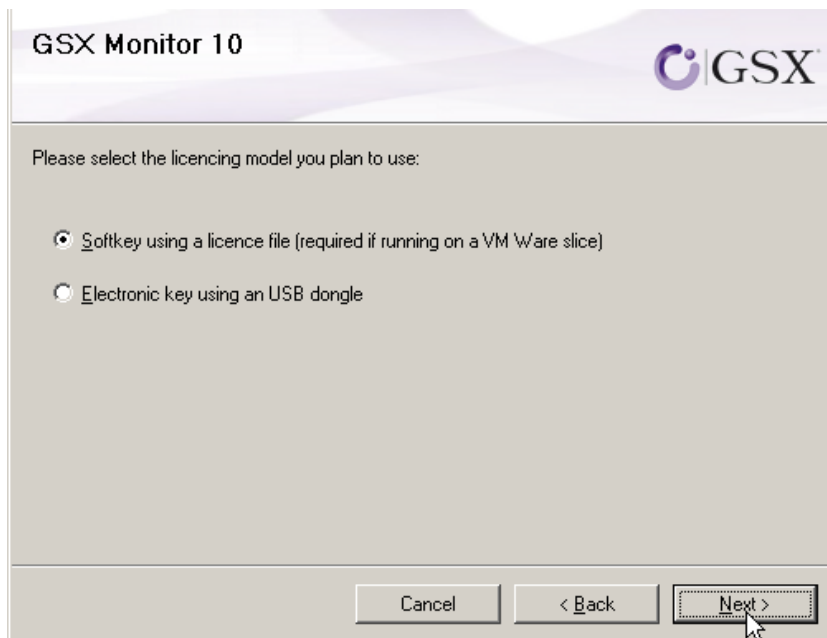
3. Agree the License Agreement and click **Next**:



4. Click **Next** to start the installation:

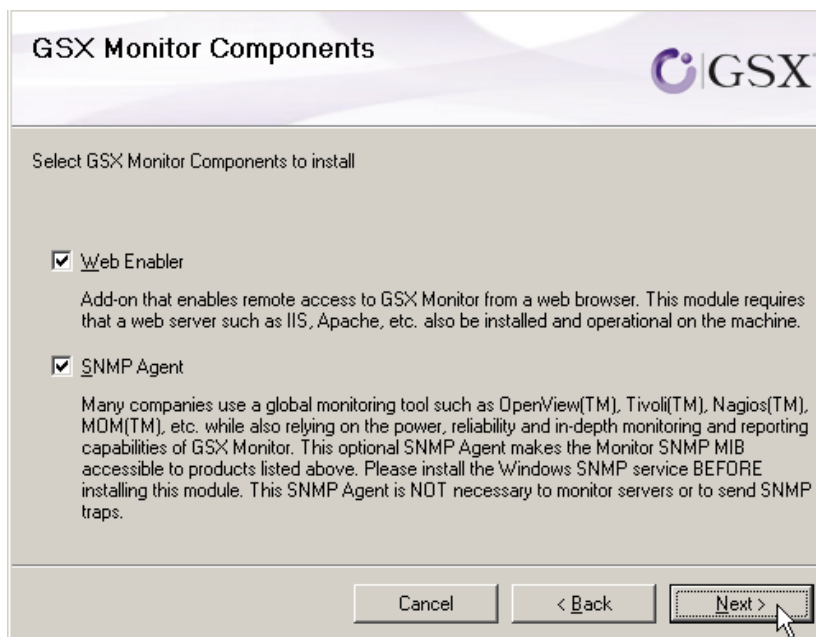


5. Select whether you use a Hard (dongle key) or a Soft Key. This is critical to be accurate with this selection otherwise GSX Monitor will not start.

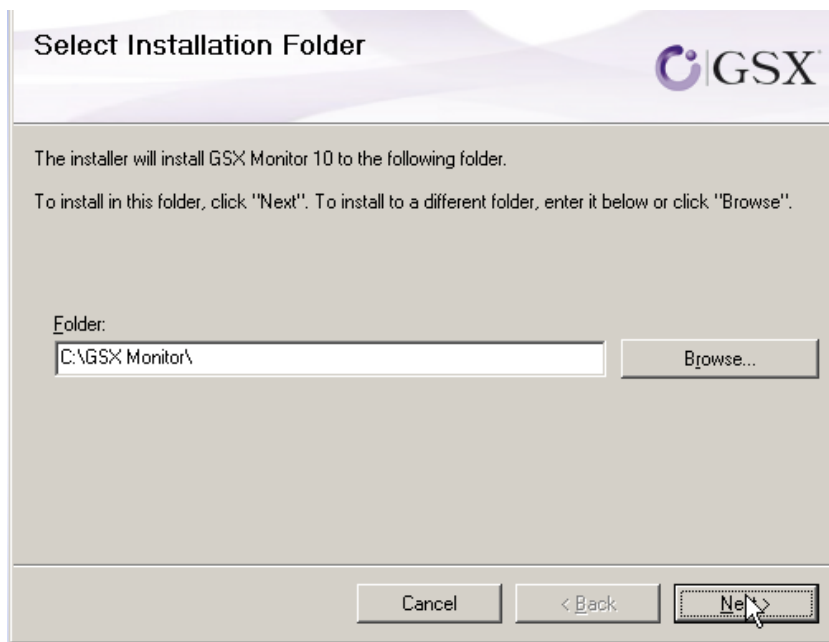


6. Select the GSX Monitor options that you wish to install:

- **Web Enabler** allows the contents of your GSX Monitor screen to be viewed from a web browser. Since it has no special dependencies, **GSX recommends installing the GSX Web Enabler now.** This feature can be tested from the *Preferences > Monitor OnTheFly > Web Enabler > Test button.*
- **SNMP Agent** enables you to send SNMP Traps to other applications. SNMP Support is an advanced feature that allows interfacing GSX Monitor with Global SNMP monitoring software such as Tivoli, Unicenter, Patrol, etc. It is not necessary for a productive evaluation of GSX Monitor. Windows SNMP Service must be installed on the GSX Monitor Client before installing this option. If you do not have the Windows SNMP service installed on your machine or you are not sure, leave this feature unchecked. It can always be installed later.



7. Select the installation folder (recommended to use the default).

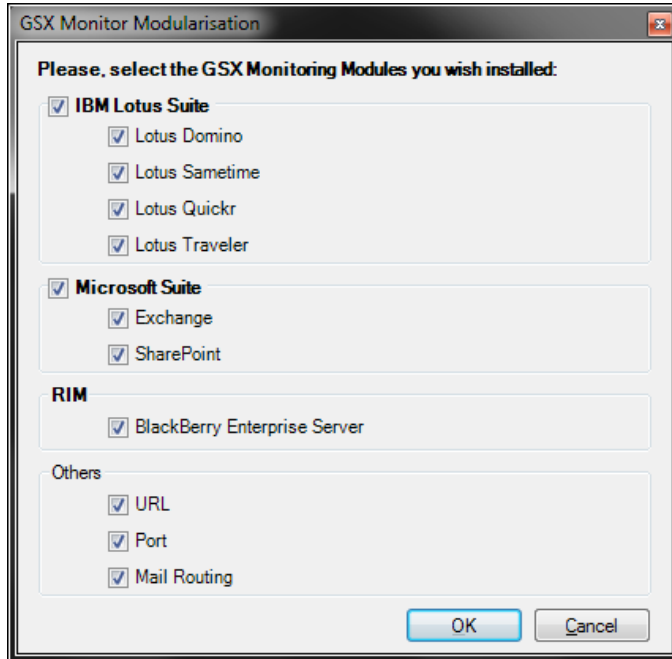


8. If you have selected Web Enabler, select the folder where it resides:



You have now completed the install.

9. Start GSX Monitor.
10. Choose the monitoring modules that you wish to install (if you do not select a module now, you can easily install it later):

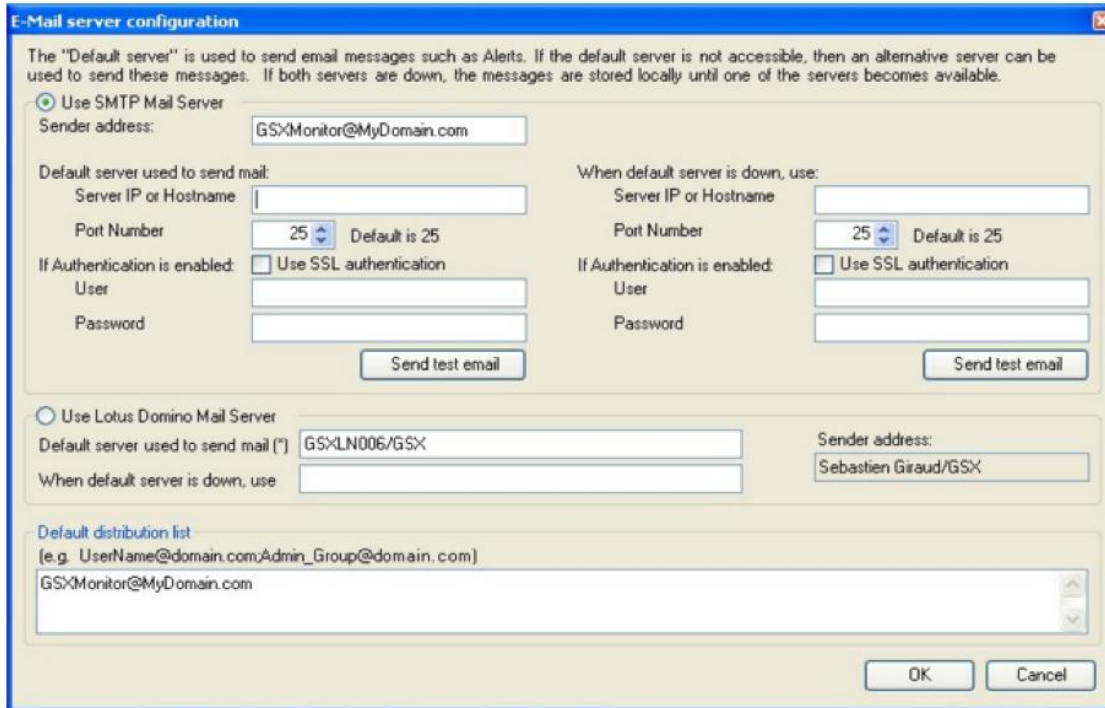


You are ready to start using GSX MONITOR.

GENERAL CONFIGURATION

Start GSX Monitor from the Start Menu or from the icon on the desktop.

Setting up email servers



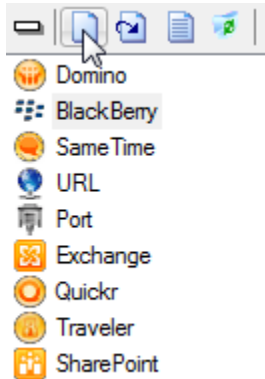
The first time you launch GSX Monitor, you have to setup the email servers for sending Alerts and Reports from GSX Monitor. You can choose between a SMTP mail server or a Lotus Domino mail server to send emails from GSX Monitor. Alternate servers can be set in primary servers are unavailable.

You have also to set here the "Default distribution list" which is the people, groups, and mail-in database names to which alerts and reports are sent. A carriage return ('Enter' key), comma, or semi-colon can be used to separate multiple entries.

For a SMTP server, use an internet email format, since mail is to be resolved and routed through SMTP.

Adding New Server Entries


1. Click on **Server Settings** to bring up the Server Settings view.
2. Click on the category for which you want to create a server.
3. Click on the **Create a new server entry** button:



The Server Creation Wizard is launched for the category you have selected.

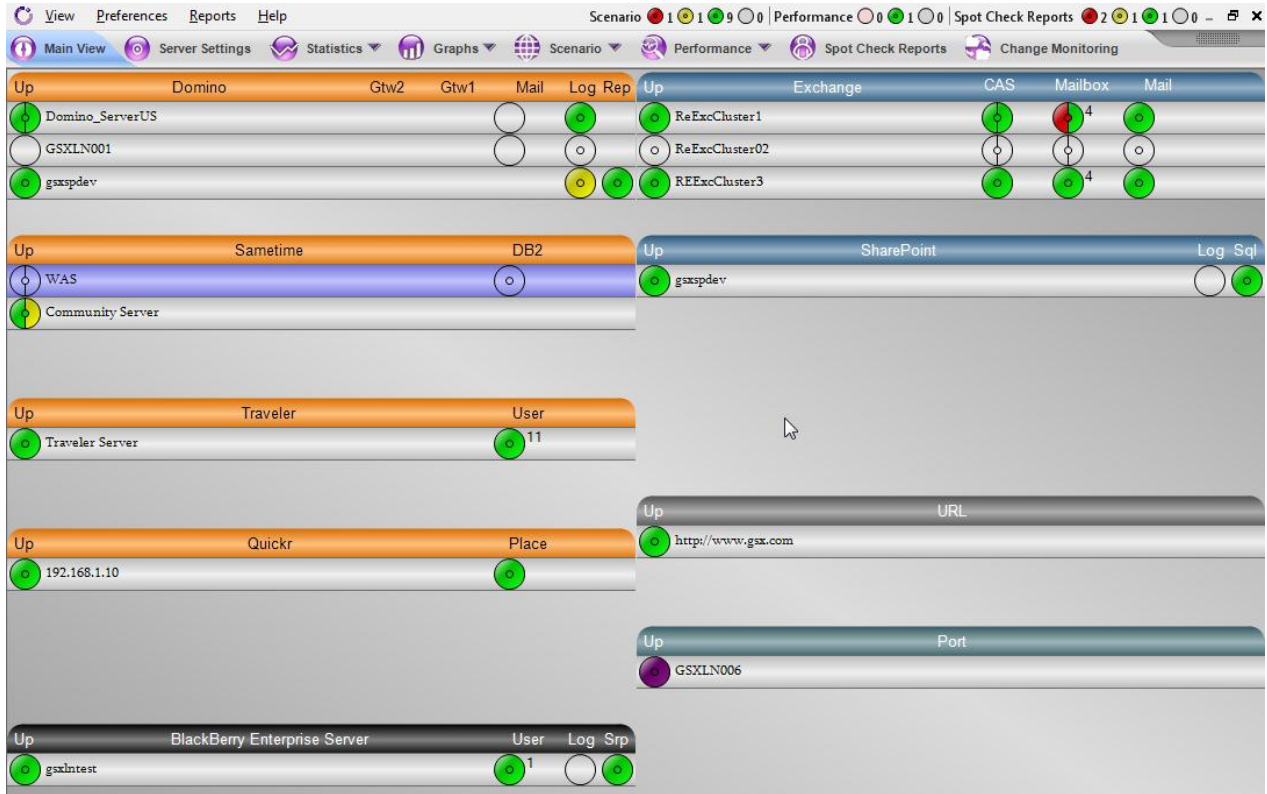
Default values are appropriate for most environments. GSX Monitor makes extensive use of tooltips, so if you do not understand the meaning of a particular field, hover your pointer over it and GSX Monitor will display its meaning.

NOTE: you can copy and paste server settings into multiple server rows so that each server does not need to be configured individually.

From the Servers Settings view, you can also create and use templates, which are pre-filled servers configurations, by clicking the Create a New Template button: 

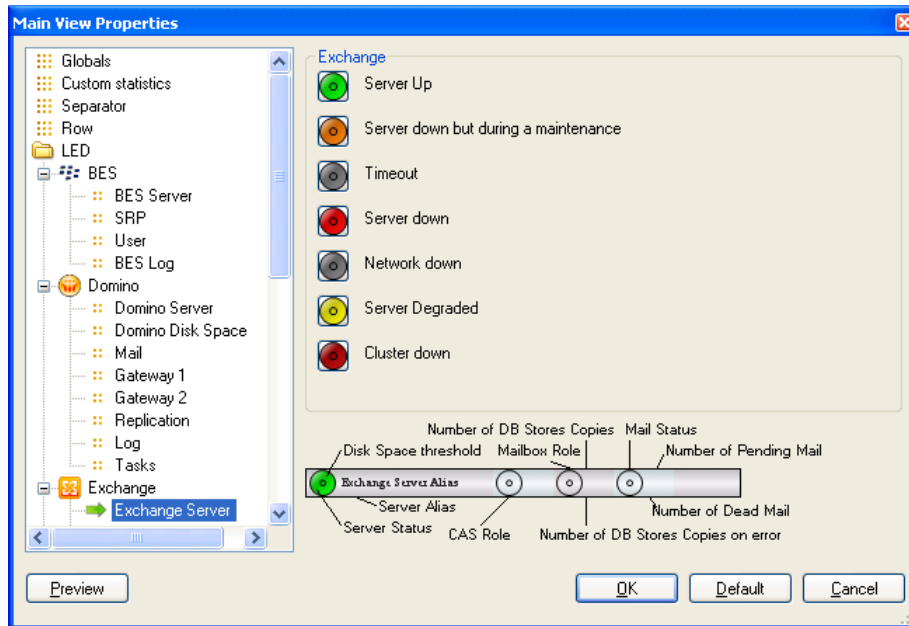
After the servers have been defined, go to the Main View and make sure that the LEDs are enabled by clicking in the column header or in the center of the individual LED.

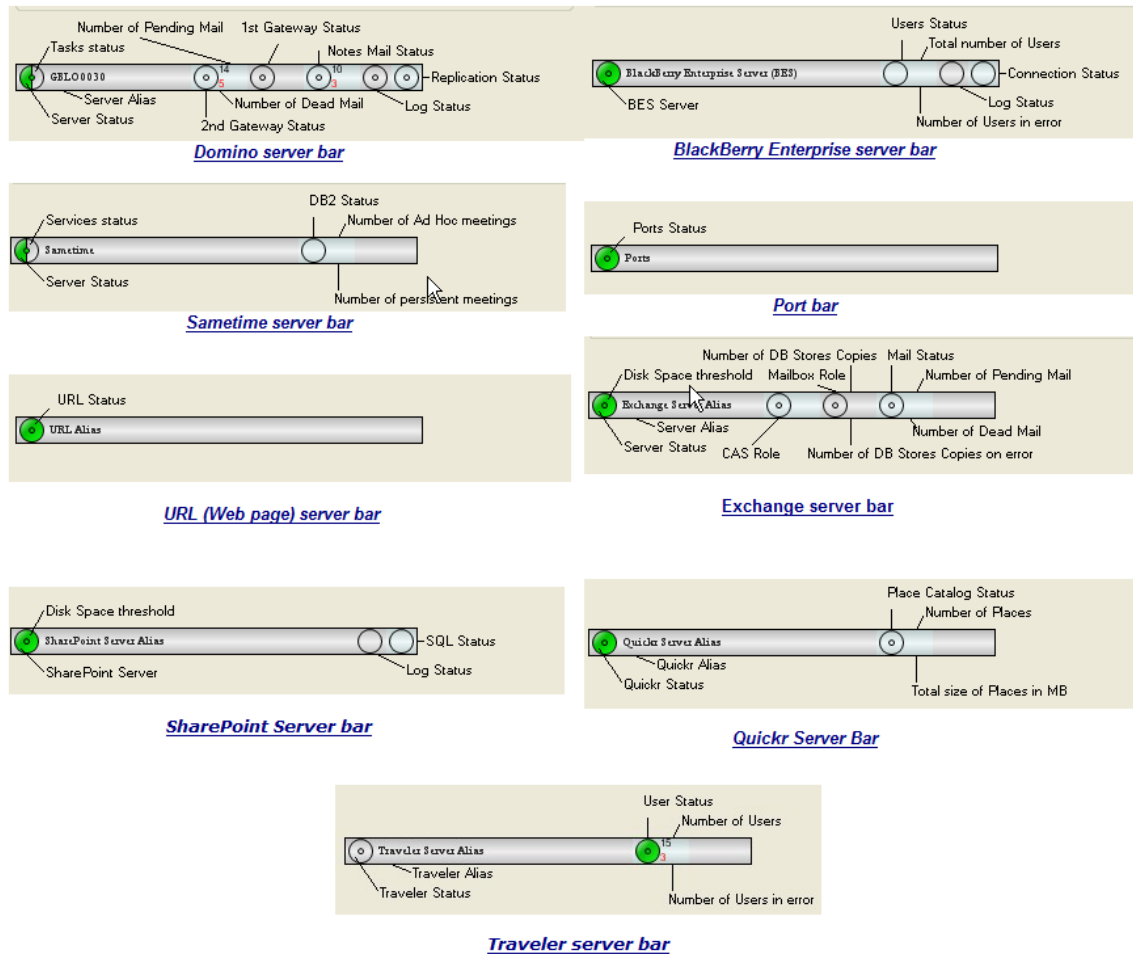
After you have configured all of the possible monitoring features, depending on what type of servers you have configured, the entries on the Main View may look something like this:



Right-clicking a server or pressing F4 key allows you to open the **Main View Properties** window.

Customize the main view by modifying the LEDs colors for each technology and for each state:





Next Steps

Basic server monitoring is now enabled, allowing you to check the status of all your servers by simply glancing at the **Main View**. But there is much more you can do with GSX Monitor and the GSX Product Documentation, available on GSX web site or by pressing the **F1** key in GSX Monitor, tells you how.

What should be configured next?

- Setup the Alert Methods.
- Enable Log Monitoring.
- Setup Internet Mail Monitoring.
- Set up spot check reports to help gain greater insight into what happens in your environment.
- Set up Change Monitoring configurations.



GSX Solutions

36 Boulevard Helvétique
1207 Genève
SWITZERLAND

Tel: +41 22 735 82 40

Fax: +41 22 735 82 45

sales@gsx.com