



GSX Monitor Version 10.1

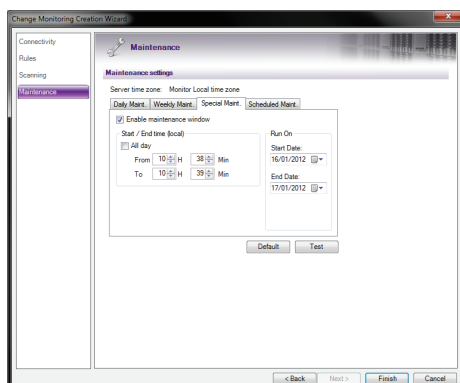
Change Monitoring Module for Lotus Domino

GSX Monitor is one of the most widely used monitoring tools on the market today and currently safeguards over 6 million email accounts worldwide. Using one application you can simultaneously monitor IBM Lotus Domino, Quickr, Traveler, and Sametime, Microsoft Exchange, Microsoft SharePoint, Blackberry Enterprise Servers, LDAP, SMTP ports, and URLs.

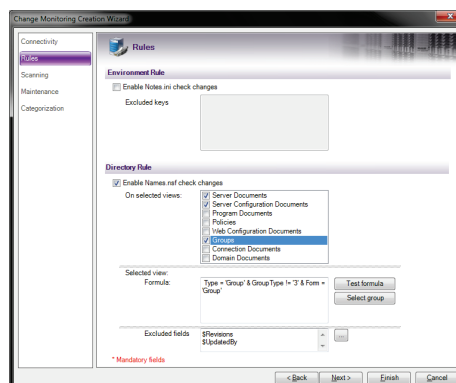
Now, with Version 10.1, you can extend the power of **GSX Monitor** with the new Change Monitoring module for Lotus Domino environments. Due to the distributed architecture of the Lotus Notes and Lotus Domino platform, the environment is often supported by regional administration teams who share global configuration items. Controlling and monitoring changes to the environment can be challenging. The Change Monitoring module allows you to track and manage change requests, ensure compliance to corporate policies, monitor changes to groups, and demonstrate that security policies are monitored and enforced.

LOTUS DOMINO CHANGE MONITORING MODULE

- ✓ Understand the changes in your environment – Who made a change? What was changed? When was it changed?
- ✓ Improve quality through better information and control
- ✓ Increase security by tracking unauthorized changes
- ✓ Identify threats and take remedial action before your service is impacted
- ✓ Reduce potential errors and replication due to address book overlap
- ✓ Manage a large volume of changes



Change Monitoring Maintenance



Change Monitoring Rules

WHAT IS MONITORED?

The Domino Change Monitoring module monitors changes to the following configuration items in the Lotus Notes Address Book:

- ✓ People
- ✓ Groups
- ✓ Server Documents
- ✓ Connection Documents
- ✓ Server Configuration Documents
- ✓ Program Documents
- ✓ Policies
- ✓ Server's Notes.ini
- ✓ Web Configuration Documents
- ✓ Domain Documents

You can choose to monitor all instances or specific instances of a configuration item.

MANAGING GROUPS

The Lotus Notes Address Book can contain thousands of groups, with group administrators granting access and rights to various databases. The Change Monitoring module allows corporate level administrators to select key groups and monitor the changes in those groups.

CONTROL AND COMPLIANCE

The Lotus Notes and Domino platform is highly distributed, and changes can be difficult to manage. The Change Monitoring module empowers administrators with full visibility of the changes occurring in their environment.

For audit purposes, it is essential to demonstrate that security policies are in place and are monitored and enforced. With the Change Monitoring module, administrators can ensure that corporate policies are fully monitored and implemented.

CHANGE MONITORING MODULE INFORMATION

The Domino Change Monitoring module produces a report that lists:

- ✓ The changed items
- ✓ The changed fields
- ✓ The times each document was edited between scans
- ✓ The users who edited each document between scans

Server Documents Changes

16 Dec 11 15:29:10 Document Name: CN=GSXT001/O=GSX

Field name	Update Date	Old Value	New Value
SMTPListenerEnabled	16 Dec 11 15:29:10	0	1
AdminPInterval	16 Dec 11 15:29:10		10

Document has been updated by (most recent first):

- CN-Fabien Aeberli/O=GSX

16 Dec 11 15:28:50 Document Name: CN=GSXU001/O=GSX

Field name	Update Date	Old Value	New Value
FullAdmin	16 Dec 11 15:28:50	CN-Fabien Aeberli/O=GSX	
Administrator	16 Dec 11 15:28:50	CN-Tim Book/O=GSX	CN-Tim Book/O=GSX;CN-Fabien Aeberli/O=GSX

Document has been updated by (most recent first):

- CN-Fabien Aeberli/O=GSX
- CN-Tim Book/O=GSX
- CN-Fabien Aeberli/O=GSX

Change Monitoring Report

MODULAR INSTALL

The Change Monitoring module for Lotus Domino is available as an add-on module for **GSX Monitor** Version 10.1. It is easy to install and configure. There is no need to re-configure your servers; the Change Monitoring module automatically reads the configuration settings of your Domino servers from **GSX Monitor**.

Configuration Item	Server Name	Role	Alert	New Class	Daily Maintenance	Weekly Maintenance	Special Maintenance	Scheduled Maintenance	Organization
GSX/360/360	GSX/360/360	Directory	None	Monitor Local	Not Set	Not Set	Not Set	Not Set	GSX
GSX/360/360	GSX/360/360	Directory	None	Monitor Local	Not Set	Not Set	Not Set	Not Set	GSX

Results

Check in Res: Today 10:30 Differences found since 14 Dec 11 10:43 (Not sent Today 10:30 E:6M)

GSX Change Monitoring Report

Environment Changes

Field name	Old value	New value
LAST_DOMINO_TIME	0033590C125768	0033E05C125768

Change Monitoring View

SOLUTIONS:

GSX Monitor and GSX Analyzer
GSX Server Guard
GSX 360



SERVICES:

Consultancy
On-site training
Support



FOR MORE INFORMATION:

For more information on GSX, visit www.gsx.com, where our resource center contains FAQs, Case Studies, Podcasts, White Papers, and Webinars.

You can also download a fully functional, 60 day evaluation copy of GSX Monitor, GSX Server Guard, and GSX 360.

CONTACT:

sales@gsx.com

